

CORBELS



W2100S

BRAID

3"W X 6"H X 3"D



W2200S

OLIVE LEAF

3"W X 6"H X 3"D



W2300S

BASKET WEAVE

3"W X 6"H X 3"D

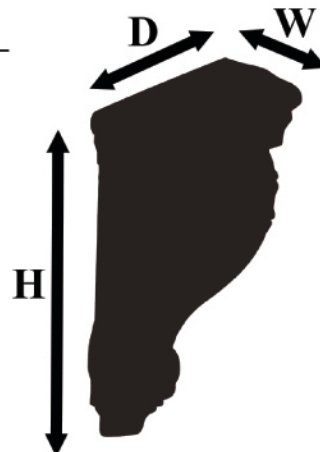
Wohners Inc.
Architectural Wood Carvings



These Corbels will soon be available in new sizes.

LARGE SIZE
3"W x 13"H x 3 1/2"D

MEDIUM SIZE
5 1/2"W x 9"H x 4"D



MOULDINGS



W9210

BRAIDED

2"W X 96"L X 1/2"D



W9220

OLIVE LEAF

2"W X 96"L X 1/2"D



W9230

BASKET WEAVE

2"W X 96"L X 1/2"D

New Handcarved Items

W 1160 Panel

66"

1 3/4" Thick



Back

Front



W6200 Leaf

3 1/2"

6"

New Size

W6210

2 3/4"

5"

W5001

Bird

2"W x 12 3/4"H x 6 3/4"D

42"

36"

5 1/4"

4 1/2"

6"

6"

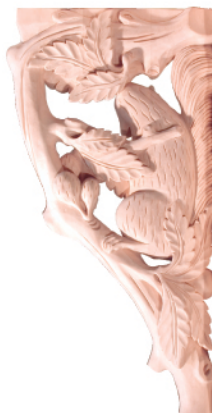
4 1/2"

4"

Front and Back of Left facing is shown, but they are also available in Right facing.

Back

Front



W5002

Squirrel

2"W x 12 3/4"H x 6 3/4"D

SH 601 New Mantel Shelf

Stock Sizes: 5' & 6' & 7'

7 1/2"

8"

Side View

3 1/2"

Stair Newels and Balusters

ITEM	A	B	C	D	E
HC1887	38"	2 1/8"	2 1/2"	8"	7 1/2"
HC1888	38"	3 1/2"	3 1/2"	8"	7 1/2"
HC1889	49"	3 1/2"	3 1/2"	9"	13"
HC1890	51"	5 1/2"	5 1/2"	9"	13"
HC1891	38"	2 1/8"	2 1/2"	8"	7 1/2"
HC1892	38"	3 1/2"	3 1/2"	7"	7 1/2"
HC1893	38"	2 1/8"	2 1/2"	8"	7 1/2"
HC1894	45"	3 1/2"	3 1/2"	9"	13"
HC1895	38"	3 1/2"	3 1/2"	8"	7 1/2"
HC1896	38"	4 5/8"	5 1/4"	8"	7 1/2"
HC1897	52"	5"	5"	9"	13"
HC1898	49"	3 1/2"	3 1/2"	9"	13"
HC1899	51"	5 1/2"	5 1/2"	9"	13"



STAIR BRACKETS

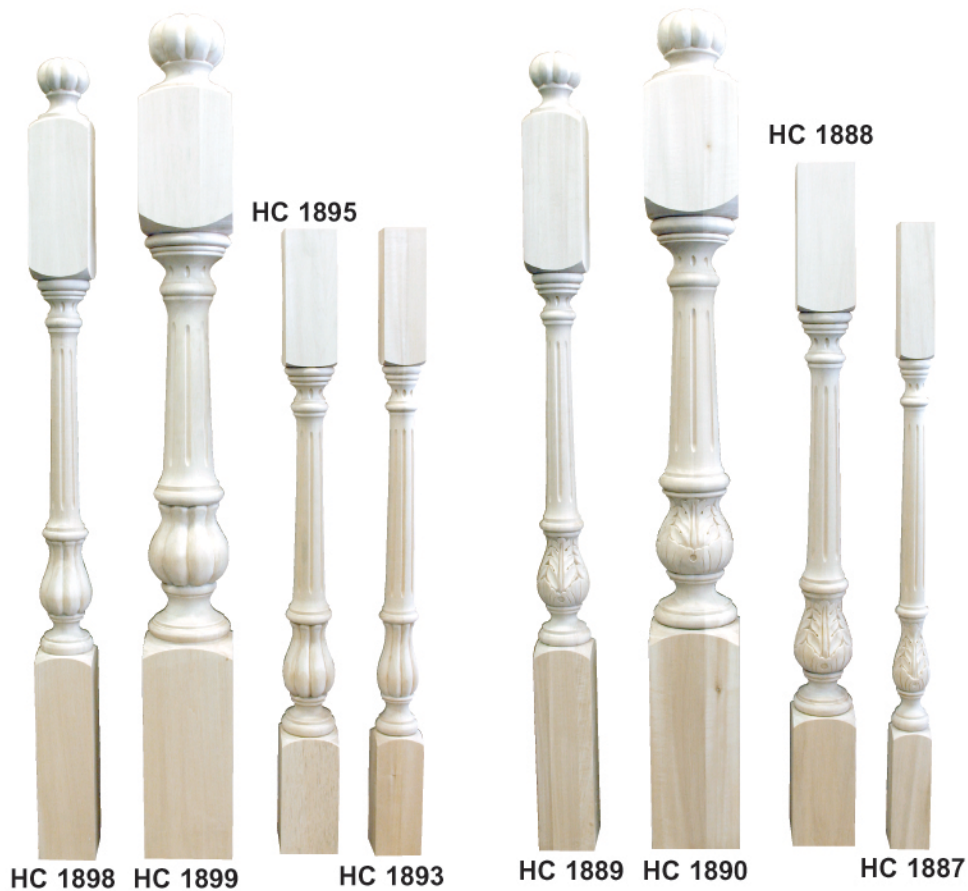
6 1/4"

5 1/4"

HC 1918 Stair Scroll
5/8" x 6 1/4" x 5 1/4"

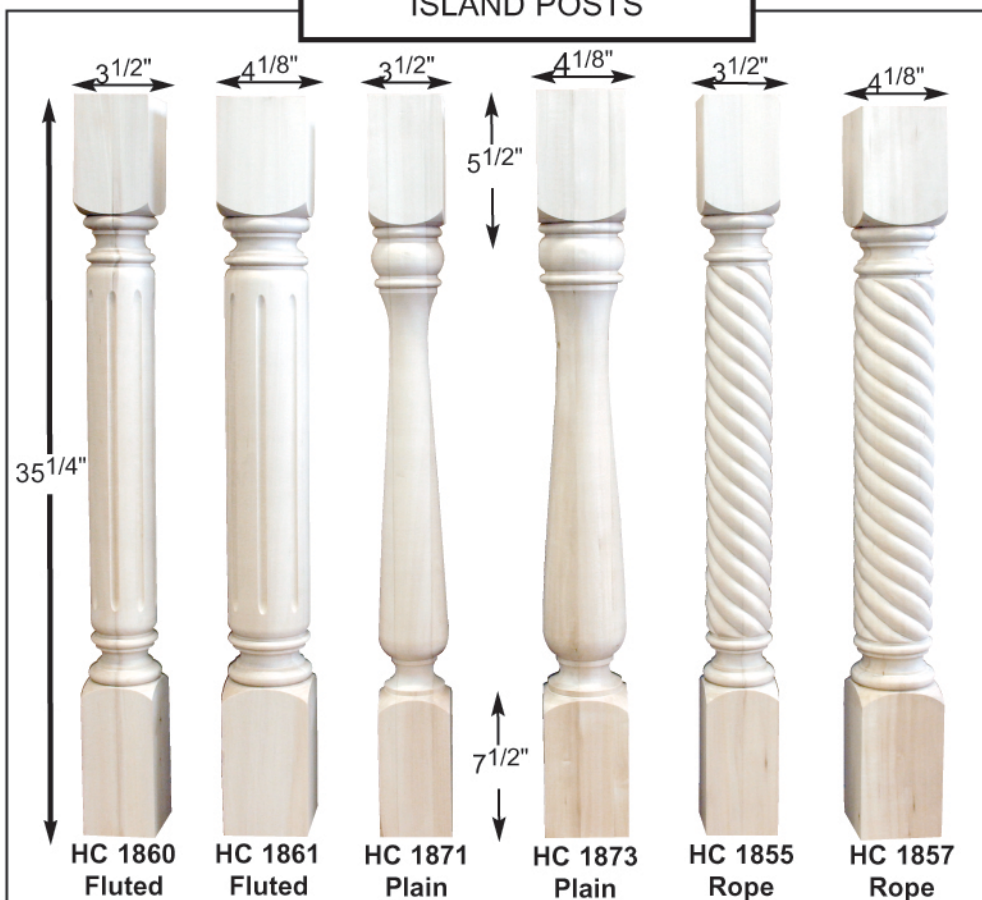
HC 1919 Stair Scroll
5/8" x 6 1/4" x 5 1/4"

DUE TO HANDCARVED NATURE SOME VARIATION IN SIZE MAY OCCUR

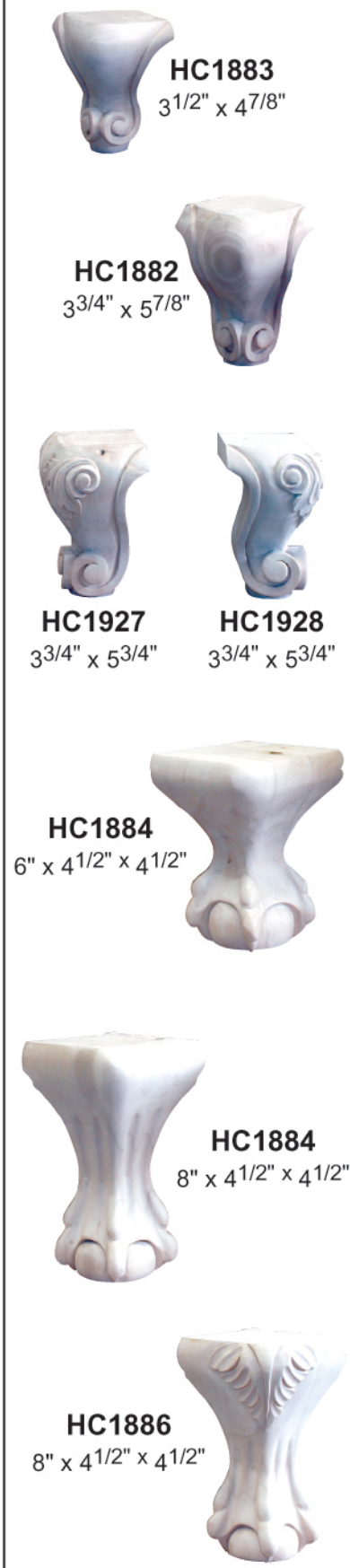


Island Legs, Corners and Cabinet Feet

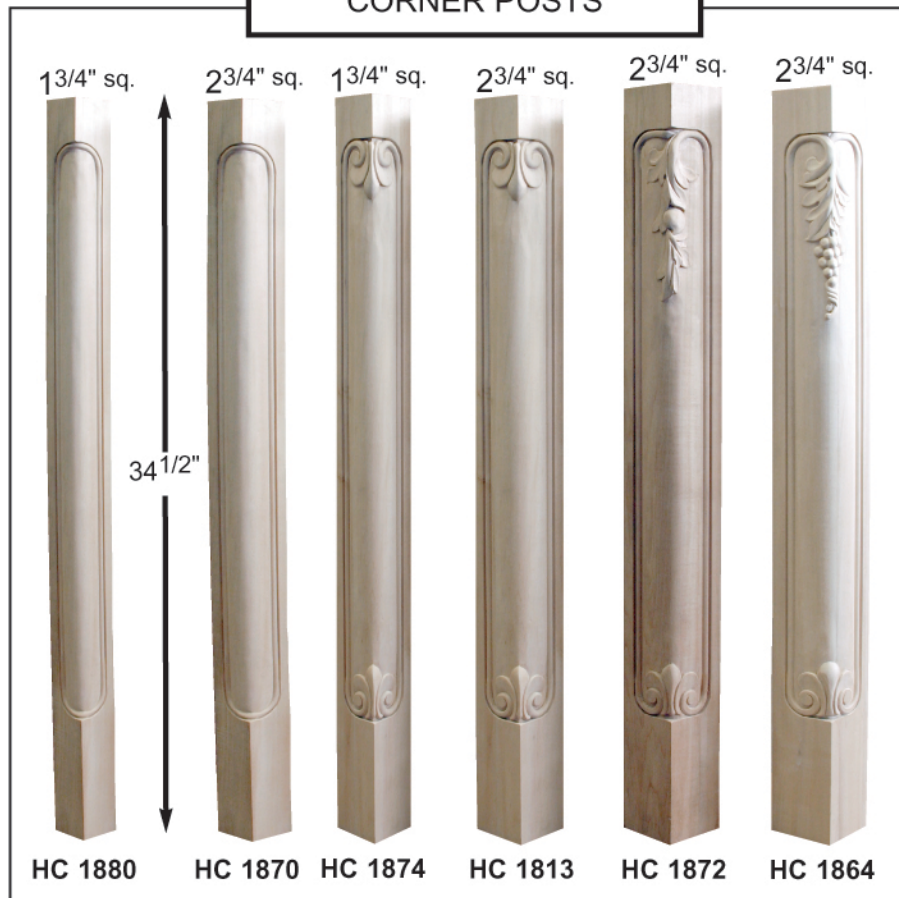
ISLAND POSTS



CABINET FEET



CORNER POSTS



Drawer Pulls and Knobs

HC 1904 Shell Pull 20"W x 3³/₄"H x 1¹/₂"D



HC 1909 Shell Pull 12"W x 3³/₄"H x 1¹/₂"D



HC 1913 Floral Basket Pull 20"W x 3³/₄"H x 1¹/₂"D



HC 1912 Floral Basket Pull 12"W x 3³/₄"H x 1¹/₂"D



HC 1911 Bow Pull 20"W x 3³/₄"H x 1¹/₂"D



HC 1910 Bow Pull 12"W x 3³/₄"H x 1¹/₂"D



HC 1901 Acanthus Pull 20"W x 3³/₄"H x 1¹/₂"D



HC 1900 Acanthus Pull 12"W x 3³/₄"H x 1¹/₂"D



HC 1909 Grape Pull 20"W x 3³/₄"H x 1¹/₂"D



HC 1908 Acanthus Pull 12"W x 3³/₄"H x 1¹/₂"D



HC 1905 Horizontal Leaf Pull 12"W x 2¹/₂"H x 1¹/₂"D



HC 1902 SHELL KNOB



*All knobs are
1³/₄"W x 2¹/₈"D*

HC 1914 DAISY KNOB



HC 1906 GRAPE LEAF KNOB



*All Pulls have
1¹/₂" screws and
threaded inserts*

HC 1915 ROSE KNOB



HC 1916 BASKET KNOB



HC 1907
Vertical Leaf Pull 2¹/₄"W x 10H x 1³/₈"D

Basket Weave Panels and Moulding



HC 1965
SMALL CORBEL
3"W x 4 1/2"H x 2"D



HC 1989
LARGE CORBEL
5"W x 10"H x 4 1/2"D



HC 1999 Basket Weave Center - 12" x 5" x 5/8"



HC 1922 Basket Weave Chair Rail 2 1/2" x 5/8" x 96"

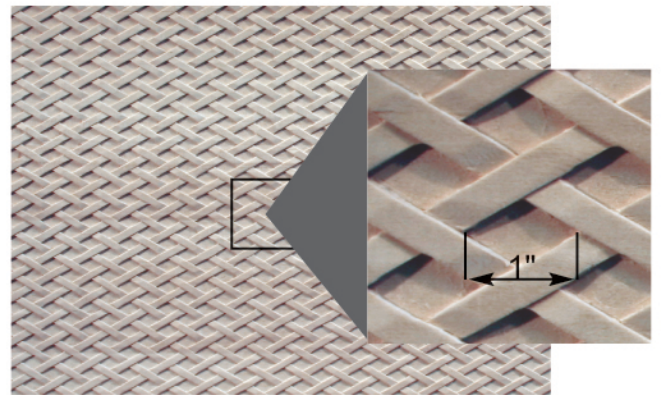
HC 1923 Basket Weave Chair Rail 1" x 1/2" x 96"



HC 1925 Basket Weave Half Round Moulding 1" x 1/2" x 96"



HC 1921 Basket Weave Chair Rail 4" x 3/4" x 96"



HC 1917 Basket Weave Door Panel

24" x 36" x 3/8" Can be cut to size.



Mini 128 Mantel Business Card Holder

Wohners Inc.
Architectural Wood Carvings

factory&mailing- 29 Bergen Street Englewood, NJ 07631

Phone :(201) 568-7307 Fax :(201) 568-7415 Email: sales@wohners.com

Catalog Sales Hours: M-F 8am-5pm EST. or visit us on the web at

www.Wohners.com

visit our showroom 5 min from NYC
21 North Dean St. Englewood NJ

